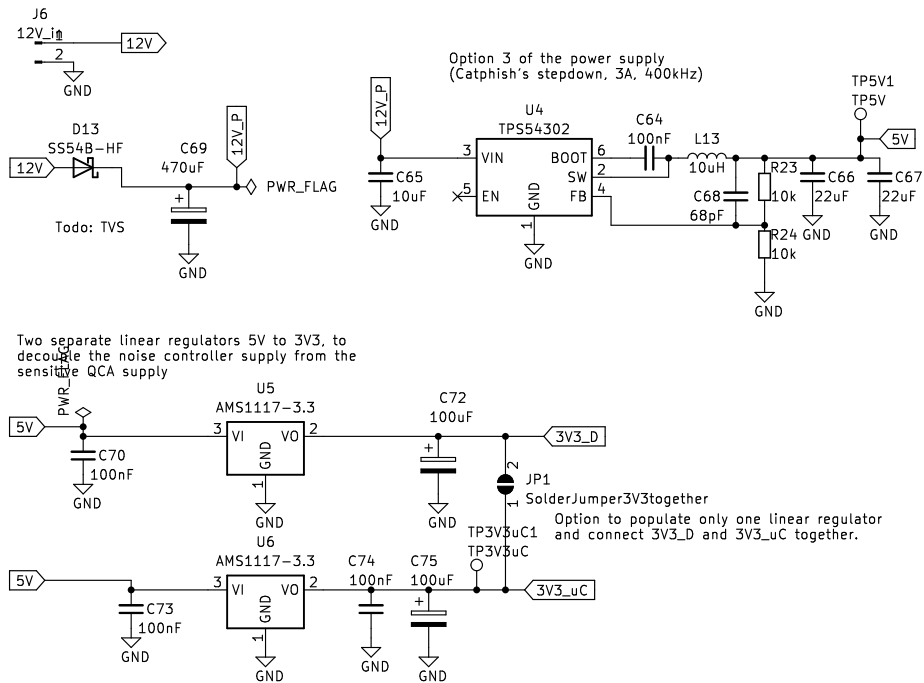


Reused by uhi22 (<https://github.com/uh22/QCA7000board>)
Originally designed by Sergey Kostyanov

Sheet: /		
File: qca7000.kicad_sch		
Title: QCA7000 modem board		
Size: A3	Date: 2022-03-03	Rev: 2
KiCad E.D.A. kicad 7.0.5-0		
Id: 1/5		



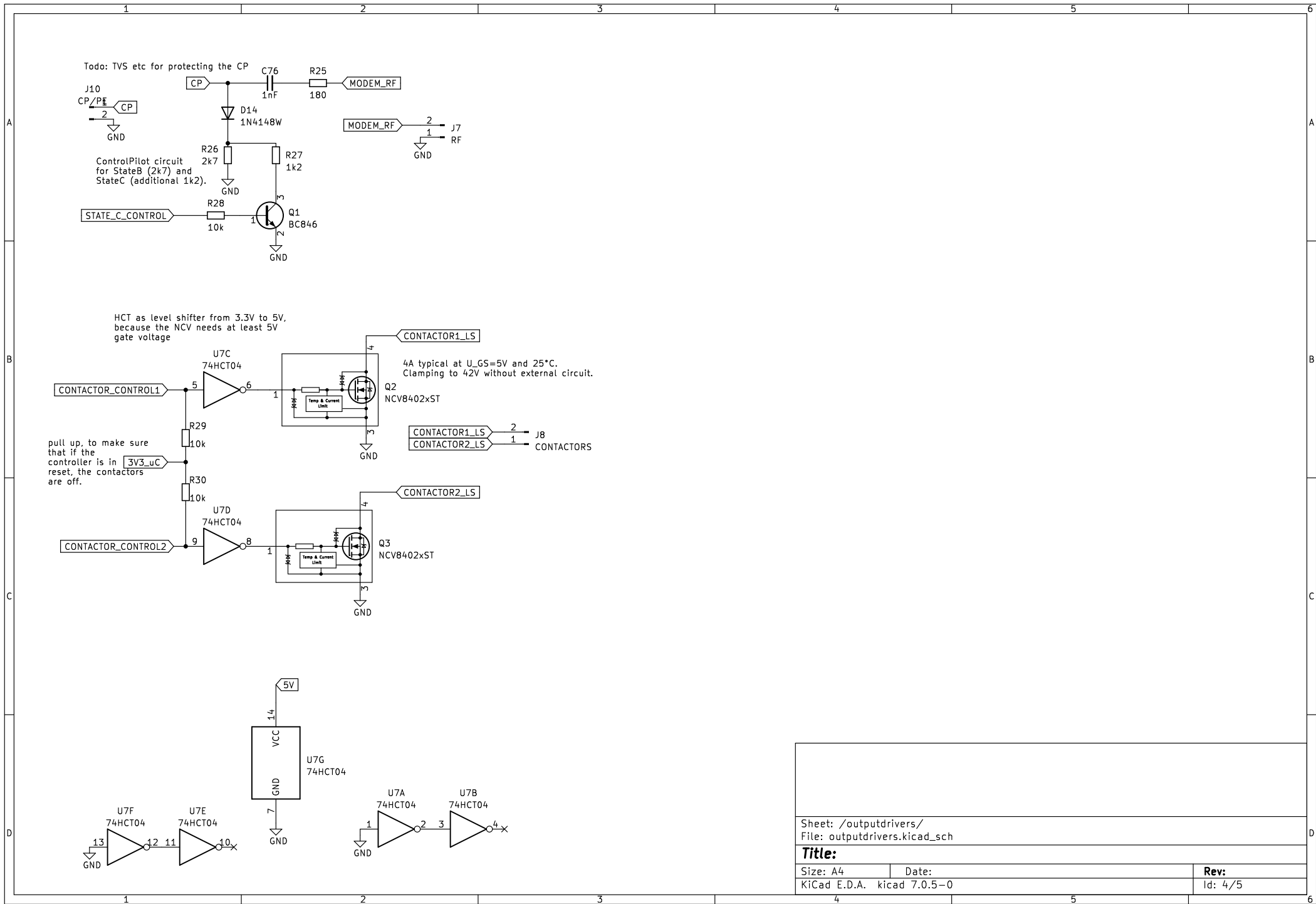


Sheet: /powersupply/
File: powersupply.kicad_sch

Title: Power Supply

Size: A4 Date:
KiCad E.D.A. kicad 7.0.5-0

Rev:
Id: 3/5



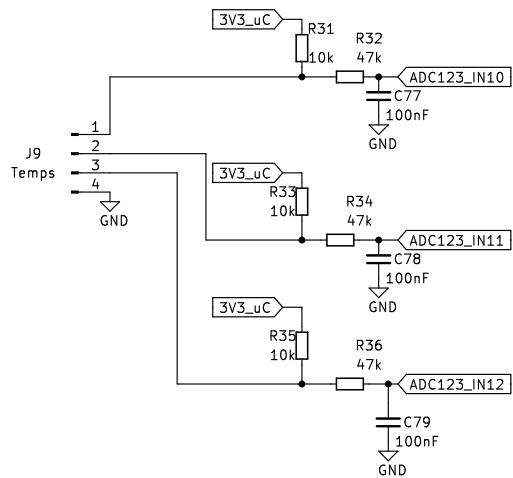
Sheet: /outputdrivers/
File: outputdrivers.kicad_sch

Title:

Size: A4
KiCad E.D.A. kicad 7.0.5-0

Date:

Rev:
Id: 4/5



Sheet: /inputs/
File: Inputs.kicad_sch

Title:

Size: A4
KiCad E.D.A. kicad 7.0.5-0

Date:

Rev:
Id: 5/5