

High Voltage Fuse

EVFC( $\phi 30$ )

RoHS

ELV



High Voltage automotive fuses with excellent durability properties

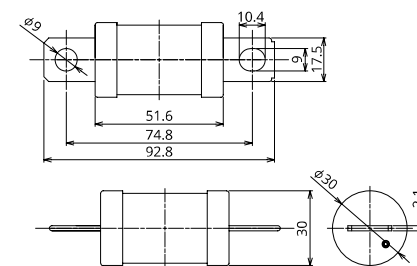


#### General Specification

Rated Voltage	DC450V
Breaking Capacity	6000A
Recommended Operating Temp.	-40°C~125°C*2
Standard	—
Country of Origin	Japan
Plating	Ni Plating
Standard Packaging	80
Insertion Force	—
Pull-out Load	—
Recommended Torque	(12.0±1.0)N·m

\*2 Please contact us for the details of operating temperature.

#### Dimensions



#### Product Lineup

Ampere Rating(A)	Part Number	Bolt Size	Diameter	Resistance Value	Voltage Drop*1
150	2870	M8	$\phi 30$	0.67 m $\Omega$	160 mV
175	2871			0.56 m $\Omega$	170 mV
200	2872			0.47 m $\Omega$	170 mV
225	2873			0.40 m $\Omega$	170 mV
250	2874			0.35 m $\Omega$	180 mV

\*1 Voltage drop: apply 100% of the rated current.

\*In case a product other than the ones published in this document is desired, please contact us for details.

#### Time-Current Characteristic

% of Ampere Rating(A)	Operating Time	
	Min	Max
110%	4hrs.	—
200%	1sec.	300sec.
300%	0.2sec.	30sec.
500%	0.05sec.	1sec.

\*The fuse characteristic may change depending on the conditions of use.

#### Time-Current Characteristic Chart

