

## ELECTRIC DRIVE 40 kW –ECE 85

### 30/ 60 kW - TECHNICAL CHARACTERISTICS

General Characteristics		
nominal battery voltage	[V]	288
battery voltage range	[V]	180÷400
power (nominal / peak)	[kW]	30 / 60
operating temperature range	[°C]	- 20 ÷ + 65
cooling system (flow rate)		water + glycol (10 [l/min])
total pressure drop (motor + inverter)	[bar]	0.1
max. cooling temperature	[°C]	60

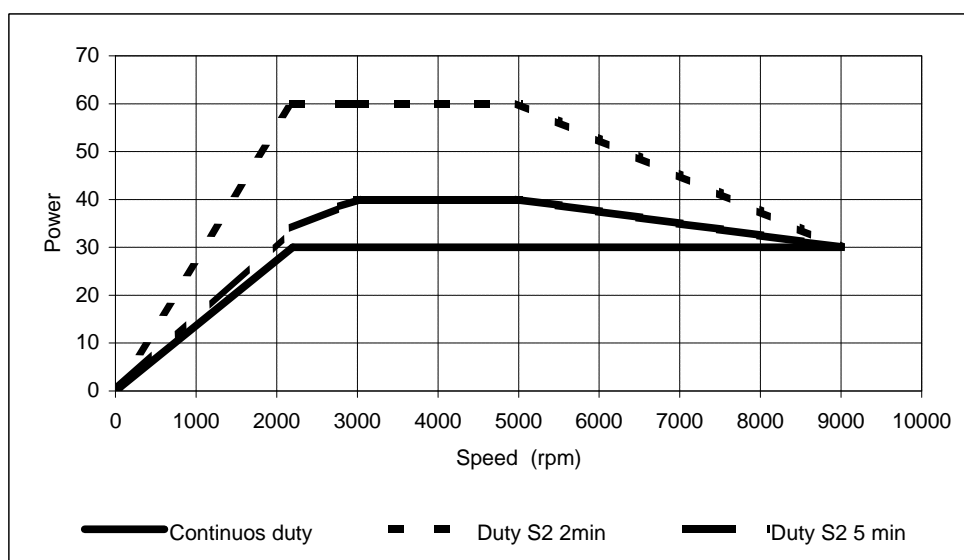
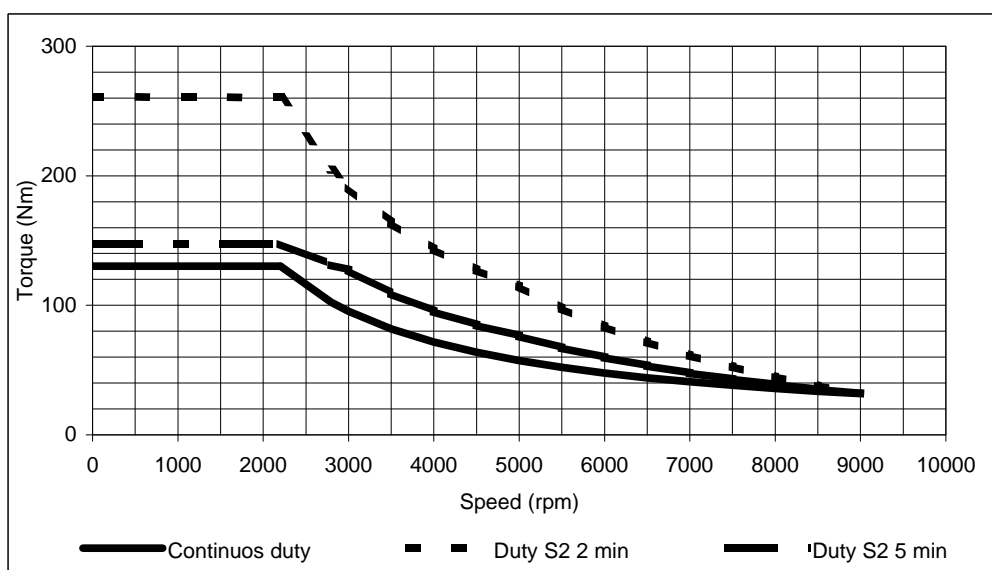
Electric Motor Characteristics		
type		AC drive (squirrel cage induction)
code		AxH 207B 42Gxxx (1)
nominal power (ECE 85) (S2 5 min)	[kW]	40 ( 3000 rpm)
nominal power (continuous duty)	[kW]	30 (2200÷9000 rpm)
peak power ( ≤ 2 min.)	[kW]	60 (2200÷4500 rpm)
peak power ( ≤ 30 min.)	[kW]	30 (2200÷9000 rpm)
phase number		3
pole number		4
nominal speed	[r.p.m.]	3000
max. operating speed	[r.p.m.]	9000
Abs. max. speed	[r.p.m.]	10000
rated torque (0 ÷ 2200 [r.p.m.])	[Nm]	130
max. torque (0 ÷ 2200 [r.p.m.]) ( ≤ 1 min.)	[Nm]	260
insulation system		class H
temperature rise		see IEC 349
mounting arrangement		IM 3001 (1M B5)
protection degree		IP 56
bearings		ball bearing
lubrification system		grease
housing material		aluminium
end-shield material		aluminium
dimensions LxØ (ex. shaft extension)	[mm]	440 x 240
weight	[Kg]	80

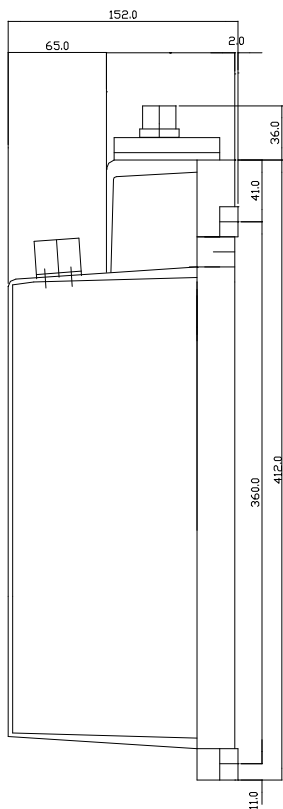
(1)

The motor is make in different versions:

A2H207B42G000 free cable - circular flange – shaft with key  
 A2H207B42G001 free cable - square flange – gloss shaft  
 A2H207B42G006 free cable - circular flange – slined shaft  
 A3H207B42G000 terminal box – circular flange – shaft with key  
 A3H207B42G001 terminal box – square flange – gloss shaft  
 A3H207B42G006 terminal box – circular flange – slined shaft

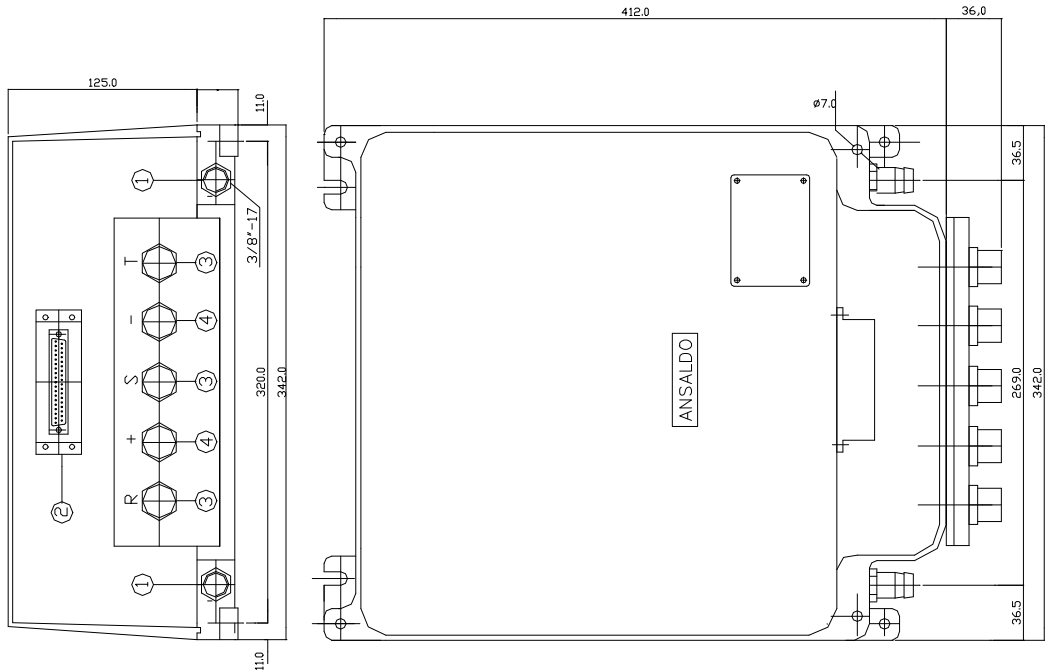
Inverter Characteristics		
type		IGBT
code		I1H 130HG000
max. DC current	[Idc]	350
max AC current	[Iac]	400
modulation		PWM
max frequency	[Hz]	320
switching frequency	[kHz]	4
control		microprocessor
protection degree		IP 56
dimensions (L x l x h)	[mm]	450 x 340 x 152
weight	[Kg]	14



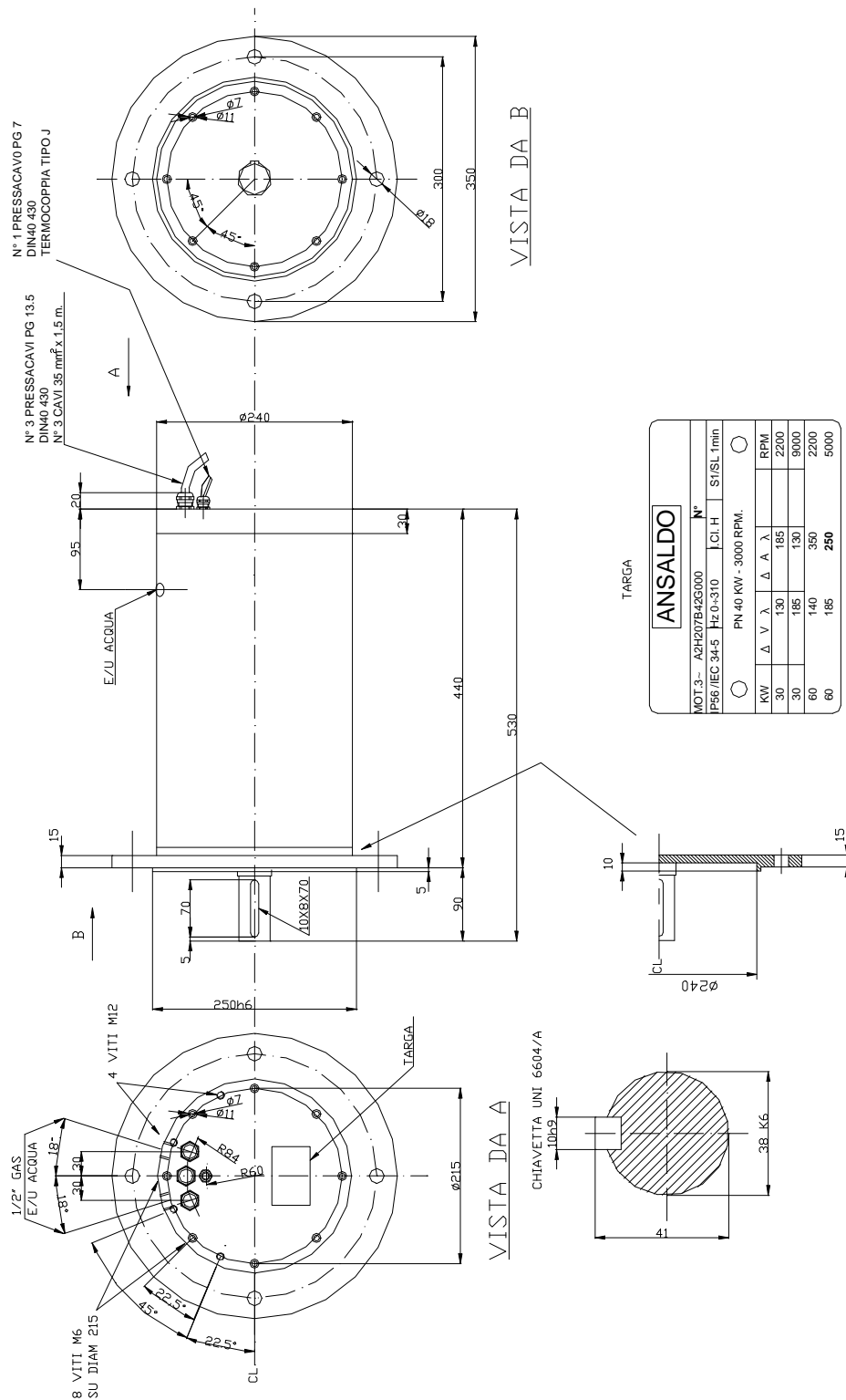


- ① water inlet-outlet 3/8"
- ② 37 pin connector
- ③ connections to electric motor 35 mm
- ④ connections to battery 35 mm

ALL DIMENSIONS IN mm



INVERTER – OVERALL DIMENSIONS



Overall dimensions - Motor type A2H207B42G000

TARGA

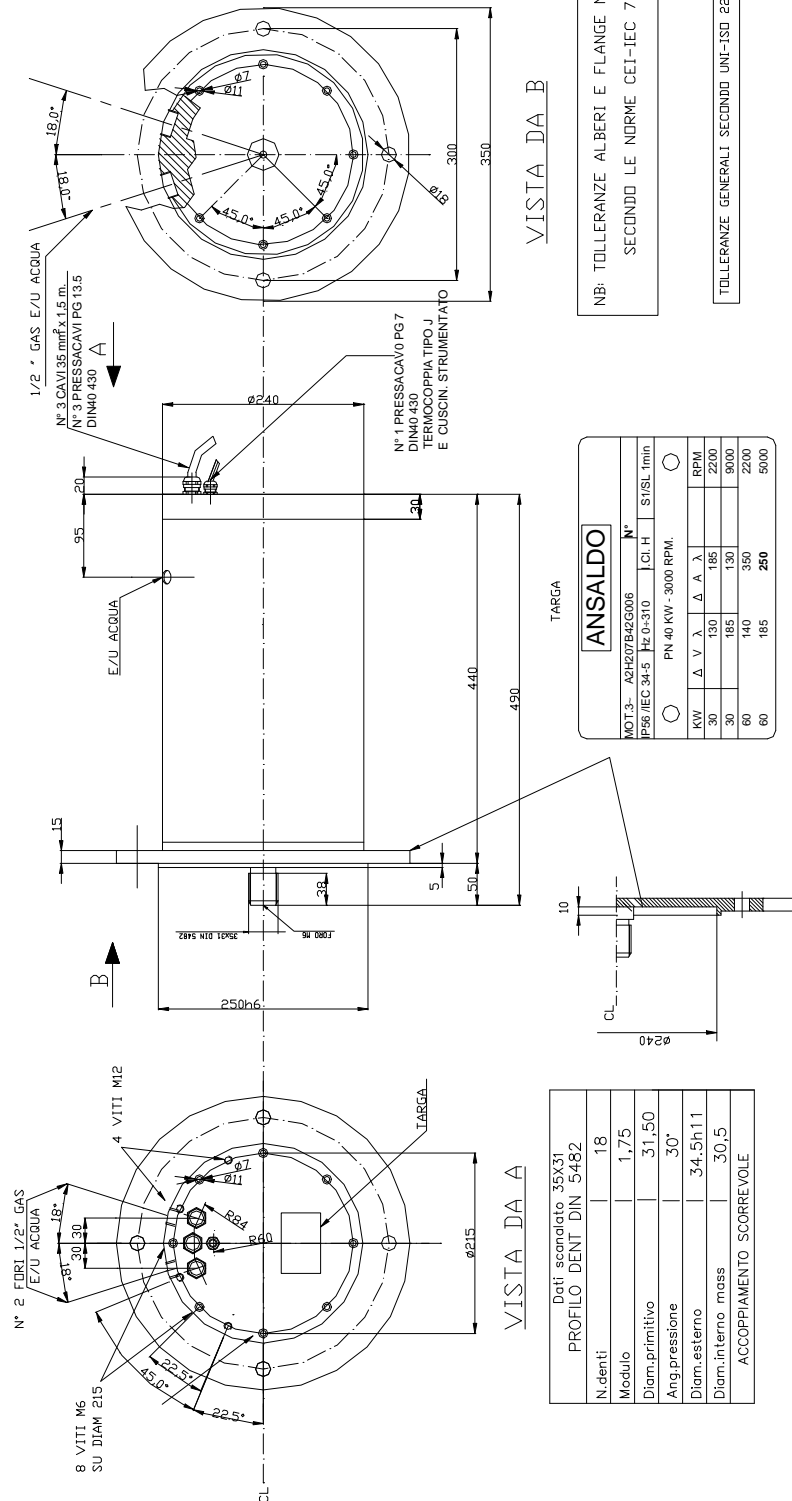
**ANSALDO**

MOT.3- A2H207B42G001	N°
P 56 / IEC 34-5 Hz 0-310	I.C.L. H S I/SL2 min
PN 40 KW - 3000 RPM.	
<div> <div></div> <div></div> </div>	
KW	$\Delta$ V $\lambda$ $\Delta$ A $\lambda$ cos $\varphi$ RPM
30	130 130 185 - - 2200
30	185 130 130 - - 9000
60	140 350 2200
60	185 250 5000

NB: TOLLERANZE ALBERI E FLANGE NON SPEC  
SECONDO LE NORME CEI-IEC 72-1

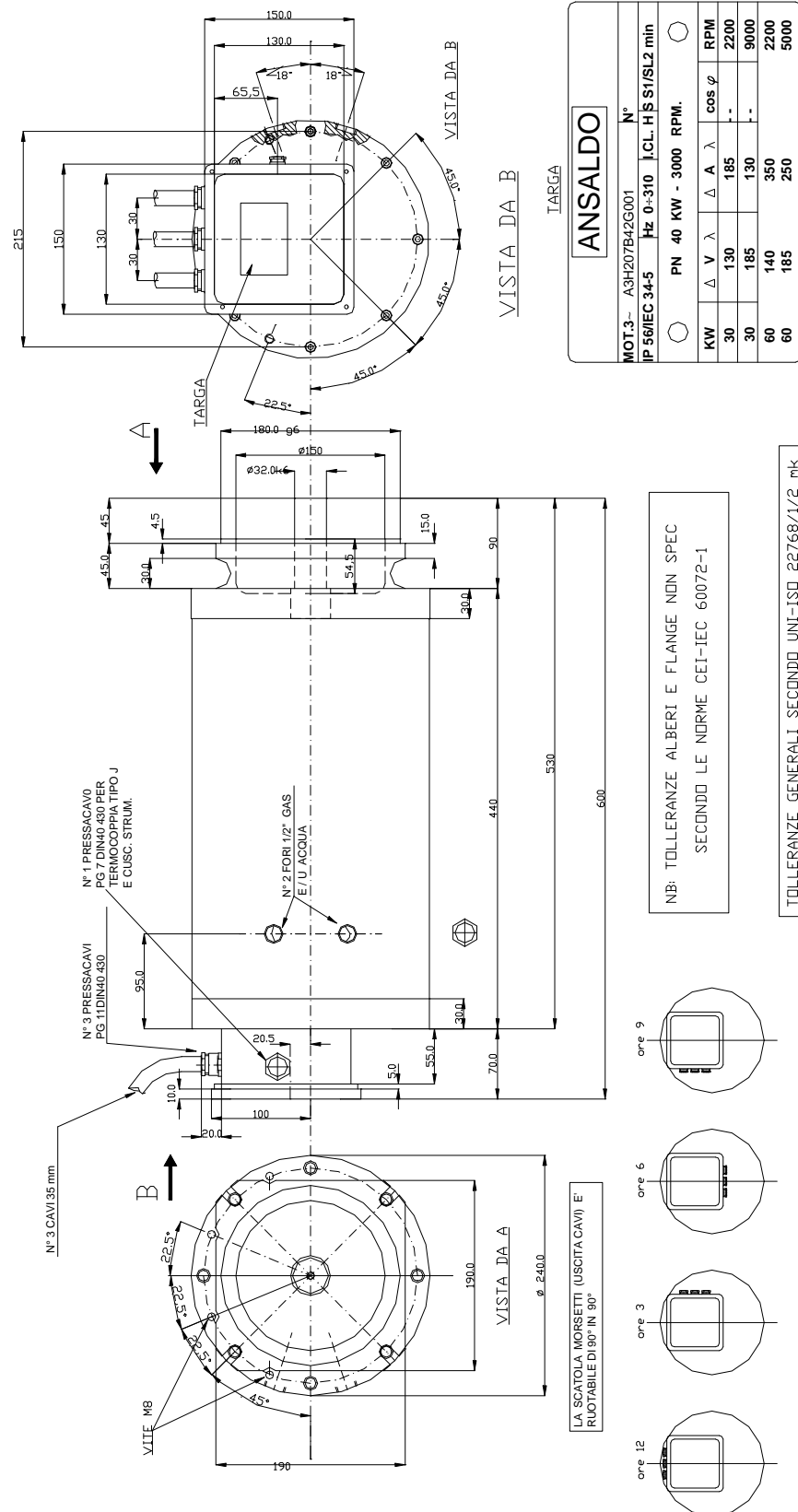
TOLLERANZE GENERALI SECONDO UNI-ISO 22768/1/2 mk

Overall dimensions - Motor type A2H207B42G001



Overall dimensions - Motor type A2H207B42G006





Overall dimensions - Motor type A3H207B42G001



